

Recreation Plan 2020-2024



VILLAGE OF LINCOLN, ALCONA COUNTY, MICHIGAN



DRAFT

This page intentionally left blank.

VILLAGE OF LINCOLN RECREATION PLAN

2020-2024

Alcona County, Michigan

Prepared for:

Lincoln Village Council

Shelia Phillips, Village President
Linda K. Somers, Village Clerk
Holly Hussain, Village Treasurer
Marsha Mahalak, Village Trustee
Bill Putsky, Village Trustee
Sara Healy, Village Trustee
Patricia Somers, Village Trustee
Amanda Zielinski, Village Trustee
Brett Wambold, Village Trustee

Prepared by:

Northeast Michigan Council of Governments
80 Livingston Boulevard, Suite U-108
P.O. Box 457
Gaylord, Michigan 49734

Adopted **Insert Date**

DRAFT

This page intentionally left blank.

Table of Contents

Chapter 1 Community Description	1-1
Extent of Plan Focus	1-1
Regional Location	1-1
Village of Lincoln History	1-2
Population	1-2
Transportation	1-2
Climate	1-2
Topography and Soils	1-3
Water Resources	1-4
Land Use Patterns	1-5
Chapter 2 Administrative Structure	2-1
Administration	2-1
Planning Commission	2-2
Department of Public Works	2-2
Relationships with Other Agencies and Groups	2-2
Finances/Park & Recreation Maintenance: Current Funding	2-3
Chapter 3 Recreation Inventory	3-1
Inventory Procedures	3-1
Village of Lincoln Recreation Inventory	3-2
Barlow Road Park/Flights of Imagination Playscape	3-2
Brownlee Lake Park (Village of Lincoln Municipal Beach)	3-3
Brownlee Lake Public Access Site	3-5
Lincoln Lakefront	3-5
Railroad Park (Veteran’s Park)	3-5
Lincoln Municipal Building and Fire Hall	3-6
Municipal Service Garage	3-6
Vacant Lots	3-6

Other Publicly-Owned Property	3-6
Alcona County Senior Center (Lincoln Memorial Center)	3-6
Lincoln Train Depot	3-7
Alcona County Library, Lincoln Branch.....	3-8
Lincoln Area Multi-Use Pathway (LAMP)	3-8
DNR Field Office	3-8
Alcona Community Schools.....	3-8
Alcona Recreation Area (ARA)	3-9
Privately-Owned Recreation Properties	3-11
Recreation Opportunities Outside of the Village Boundaries.....	3-11
Recreation Outside of Alcona County	3-16
Chapter 4 Planning and Public Input Process.....	4-1
The Village of Lincoln Planning Process	4-1
Public Input.....	4-2
Recreation Survey Publicity.....	4-2
Public notice for the 30 day review period for the recreation draft plan and the public meeting	4-3
Planning Commission resolution to recommend adoption of the plan (meeting minutes)	4-3
Village Council adoption resolution and meeting minutes for the recreation plan	4-3
MDNR submittal letter.....	4-3
Alcona County submittal letter.....	4-3
NEMCOG submittal letter.....	4-3
Chapter 5 Goals, Objectives, and Action Plan	5-1
Goals and Objectives	5-1
Capital Improvement Plan	5-4
Basis for Action Program.....	5-9
Appendix A- Results of Online Recreation Survey	
Appendix B- Post-Completion Self-Inspection Report	
Appendix C- Community Park and Recreation Plan Checklist	

FIGURES

Figure 1-1 Location of Alcona County	1-1
Figure 1-2 The Village of Lincoln's Soil Building Constraints	1-3
Figure 1-3 Location of Brownlee and Lincoln Lakes	1-4
Figure 1-4 Village of Lincoln Forested and Non-Forested Wetlands	1-5
Figure 1-5 Village of Lincoln Land Use	1-6
Figure 1-6 Village of Lincoln Zoning Districts.....	1-7
Figure 2-1 Village of Lincoln Administration Organizational Chart.....	2-1
Figure 3-1 Village of Lincoln's Recreational Facilities	3-10
Figure 3-2 Alcona County Recreational Facilities	3-17

TABLES

Table 2-1 Lincoln Downtown Development Authority.....	2-2
Table 5-1 Capital Improvement Schedule.....	5-5

DRAFT

This page intentionally left blank.

Chapter 1

Community Description

Extent of Plan Focus

This Recreation Plan addresses the recreational facilities and characteristics within the boundaries of the Village of Lincoln. The plan will evaluate the surrounding recreational opportunities as well as the socio-economic status of the Village and the surrounding area to determine recreational needs of the population and to plan for improvements which fit those needs.

Regional Location

The Village of Lincoln is located in the northeastern Lower Peninsula of Michigan and is situated in Alcona County (Figure 1-1). The Village is in T27N-R8E Sec.36, the northern portion of Hawes Township, and in T26N-R8E Sec. 1, the southern portion of Gustin Township. It covers 0.83 square miles of land and 0.23 square miles of water. The Village is located approximately five miles west and two miles north of the City of Harrisville.

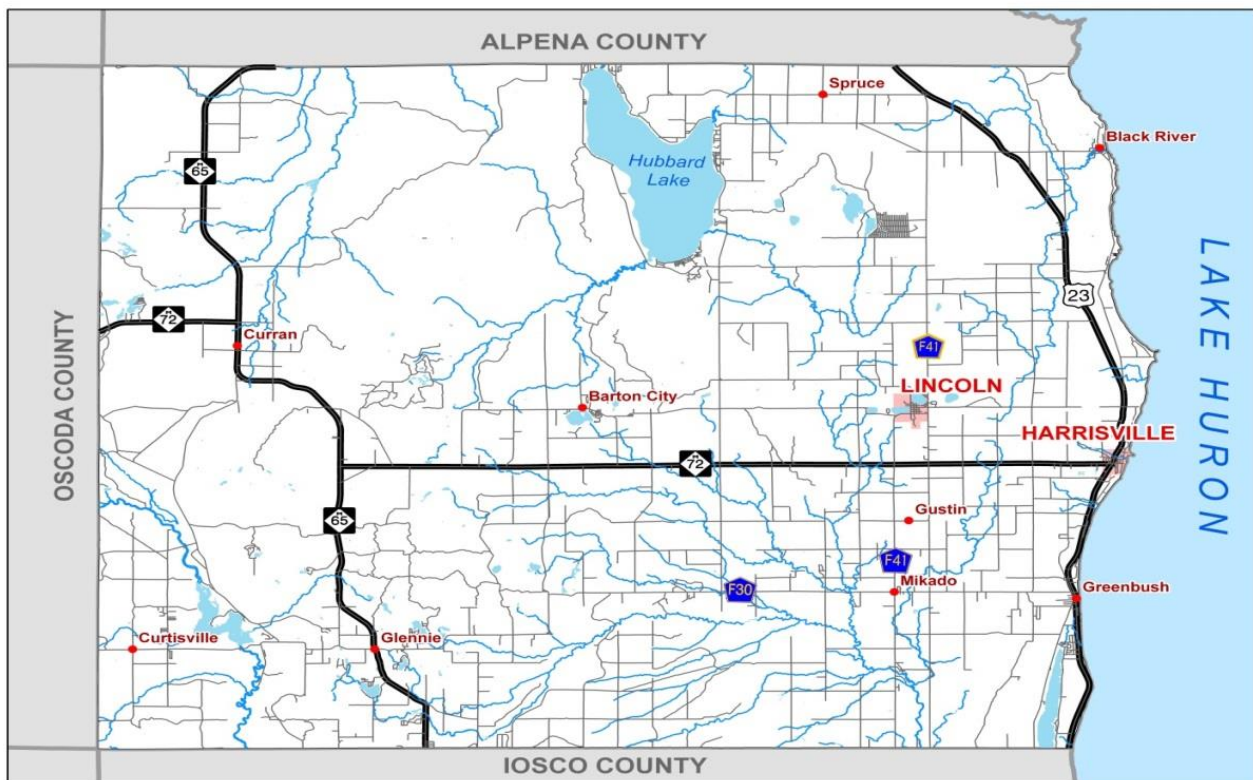


Figure 1-1 Location of Alcona County

Village of Lincoln History

In 1885, the Village of Lincoln was known as West Harrisville and was a lumber boom town. The Village's forests provided the resources to build railroads, with Alger Smith and Company building the first railroad. The Village's lakes provided a means to transport lumber to the Detroit and Mackinac Railroad's train depot.

In 1886, Blocks 1-20 were platted in Hawes Township and Blocks 21-40 were platted in Gustin Township. There are currently 356 lots in the Village due to land acquisitions. In 1899, the postal service changed West Harrisville's name to the Village of Lincoln, which became incorporated as a village with the Local Act of 1907 No. 575.

Population

According to the 2010 U.S. Census Bureau, the Village of Lincoln had a population of 337 people and 236 total housing units. Of the total housing units, 47 were classified as seasonal, recreational, or occasional use. Based on the Village's average household size of 2.1, the expected seasonal population would be approximately 99 persons. Unfortunately, it is difficult to acquire an accurate number for the seasonal visitors who stay at private lodging places, campgrounds, or at the homes of family or friends.

Transportation

North Lake Street is the major road that handles the north-south traffic in the village, while Traverse Bay State Road is the major road that handles the east-west traffic. Highway F-41 runs along the eastern border of the village, becomes Main Street in downtown Lincoln, and intersects with U.S. 23 near Spruce, Michigan. The village does not have any railroads or airports (the City of Harrisville has the nearest airport).

Climate

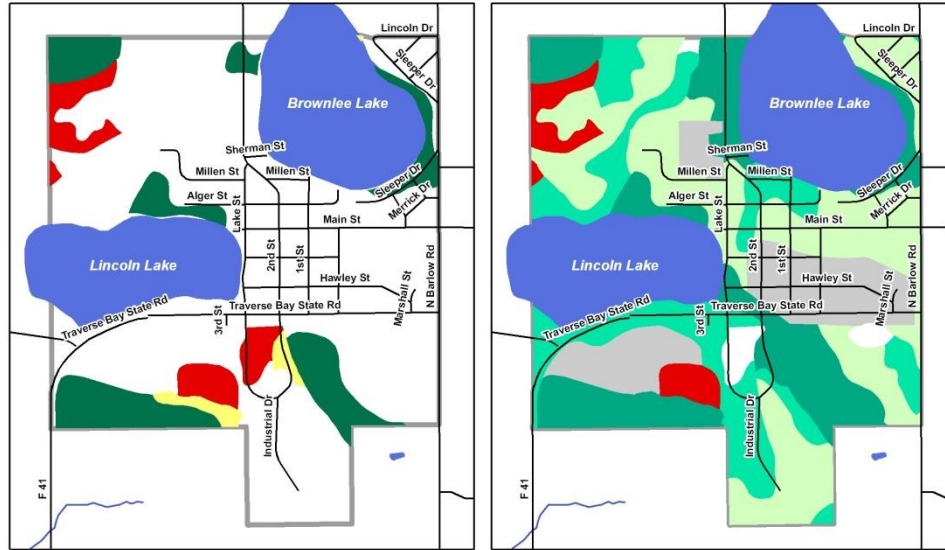
Typical of northern Michigan, the distinct four seasons offer an ever changing landscape and provide ample opportunities for year-round outdoor activities. Snowmobiling, skiing and ice fishing are some of the area's popular winter sports, while summertime activities include swimming, boating, fishing, hiking, and camping. Spring-time brings out the mushroom hunters and bird watchers, while the autumn months provide opportunities for hunting and fall color tours. Since Alcona County shares a boundary with Lake Huron, the weather is influenced by the moderating effect of the lake.

Temperature data from the Midwest Regional Climate Center indicates the climate along the immediate Lake Huron shore is semi-marine in nature and lacks many of the temperature extremes found a few miles inland.

The average annual precipitation is 30.67 inches with approximately 60% of the precipitation falling between April and September. Typically, the lowest mean temperature of the year occurs during January and February, while the highest occurs in July. The average annual snowfall is 53 inches with approximately 93 days per season receiving at least one inch of snow. However, the number of days varies from year to year.

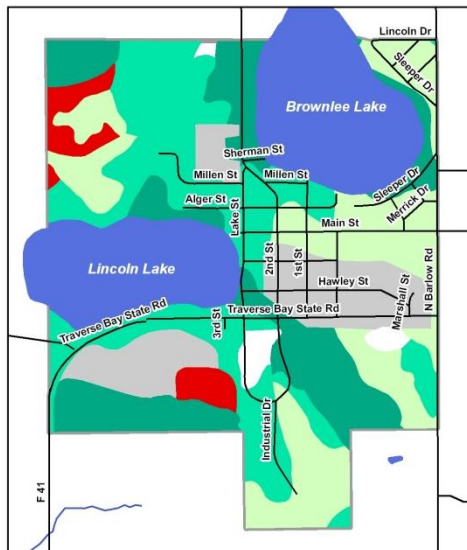
Topography and Soils

The Village of Lincoln is situated in an area with gently sloping ridges and knolls. The area also has some outwash plains, lake plains, and till plains. According to the *Soil Survey of Alcona County, Michigan*, there are five major soil classification types in the Village of Lincoln: Klacking loamy sand, McGinn loamy sand, Killmaster sandy loam, Hoist sandy loam, and Udorthents loamy. Depending on the soil type, there may be building restrictions due to steep slopes or wetness (Figure 1-2).



Steep Slopes & Hydric Soils

**Building Limitations
Buildings without Basements**



**Building Limitations
Buildings with Basements**

Village of Lincoln Soils Maps

Steep Slopes & Hydric Soils

- HYDRIC
- INCLUSIONS
- STEEP SLOPE

Soils with Buildings Restrictions

- SEVERE-WETNESS
- MODERATE
- SLIGHT
- SEVERE-SLOPE
- VARIABLE
- WATER



The digital soils data is provided by Michigan Center for Geographic Information and is derived from the soil map prepared as part of the USDA National Cooperative Soil Survey.

This map is for general planning purposes only. This map is not intended to determine soil suitability for a specific use at a specific site.

This map is not intended to restrict development of a given site. Sites classified with building restrictions may be suitable for building with proper engineering.

Figure 1-2 The Village of Lincoln’s Soil Building Constraints

Water Resources

The twin lakes, Brownlee and Lincoln, lie within the limits of the Village of Lincoln (Figure 1-3). Brownlee Lake is a shallow 90.4 acre lake with a small single outflow, a public beach, and a boat launch. Half of the lake is surrounded by a residential subdivision which makes the lake a main economic factor within the village. Some of the recreational opportunities provided on the lake include swimming, fishing, ice fishing, canoeing, sailing, boating, ice skating, wildlife viewing, snowmobiling, and winter motorcycle racing. Lincoln Lake is considered a dead lake since it was used as a repository for sawdust during the early days of the lumber industry. However, it is home to a variety of marsh grasses, plants, and a large variety of waterfowl and songbirds.



Figure 1-3 Location of Brownlee and Lincoln Lakes

Wetlands can be found around Lincoln Lake, in the southern portion of the village, and in the northwest corner of the village (Figure 1-4). These areas protect water quality, have high groundwater tables, provide wildlife habitat, support vegetation, and discharge/recharge aquifers. Development of wetlands that are state-regulated is severely restricted.

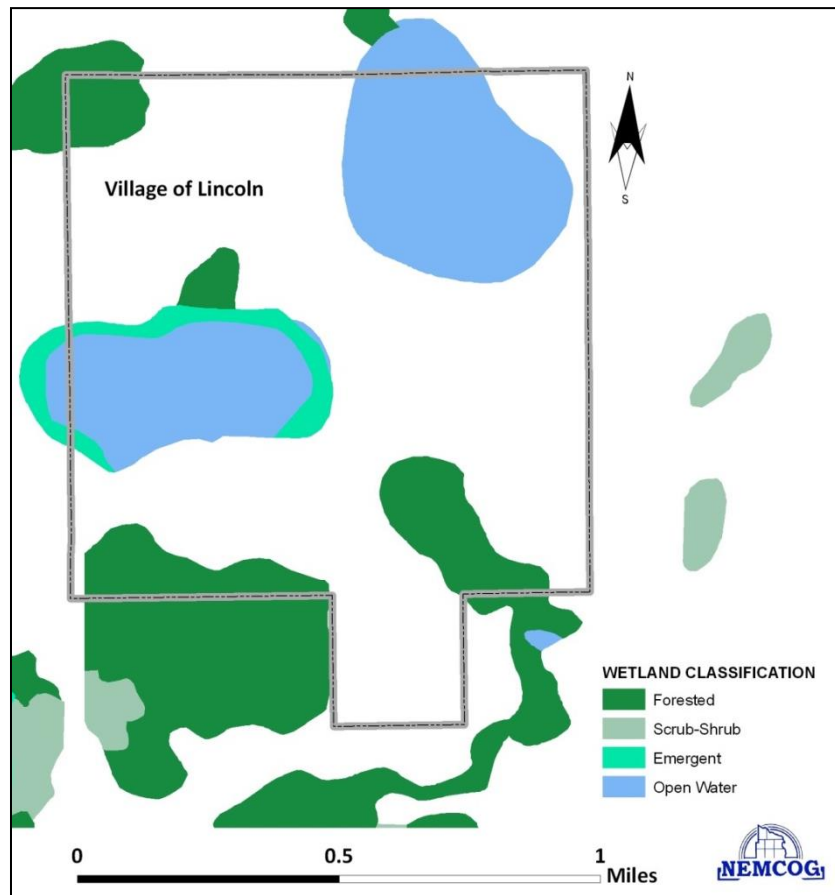


Figure 1-4 Village of Lincoln Forested and Non-Forested Wetlands

Land Use Patterns

Residential and commercial land covers are located in the central portion of the village between Brownlee and Lincoln Lakes (Figure 1-5). These land covers make up approximately 40.3% of the village, while the open water in Brownlee and Lincoln Lakes make up approximately 22.3% of the village's land cover. The village's land cover also includes 21.1% of upland forests, 17.2% of lowland forests, 14.3% of cultivated lands, and 11.6% of non-forested uplands.

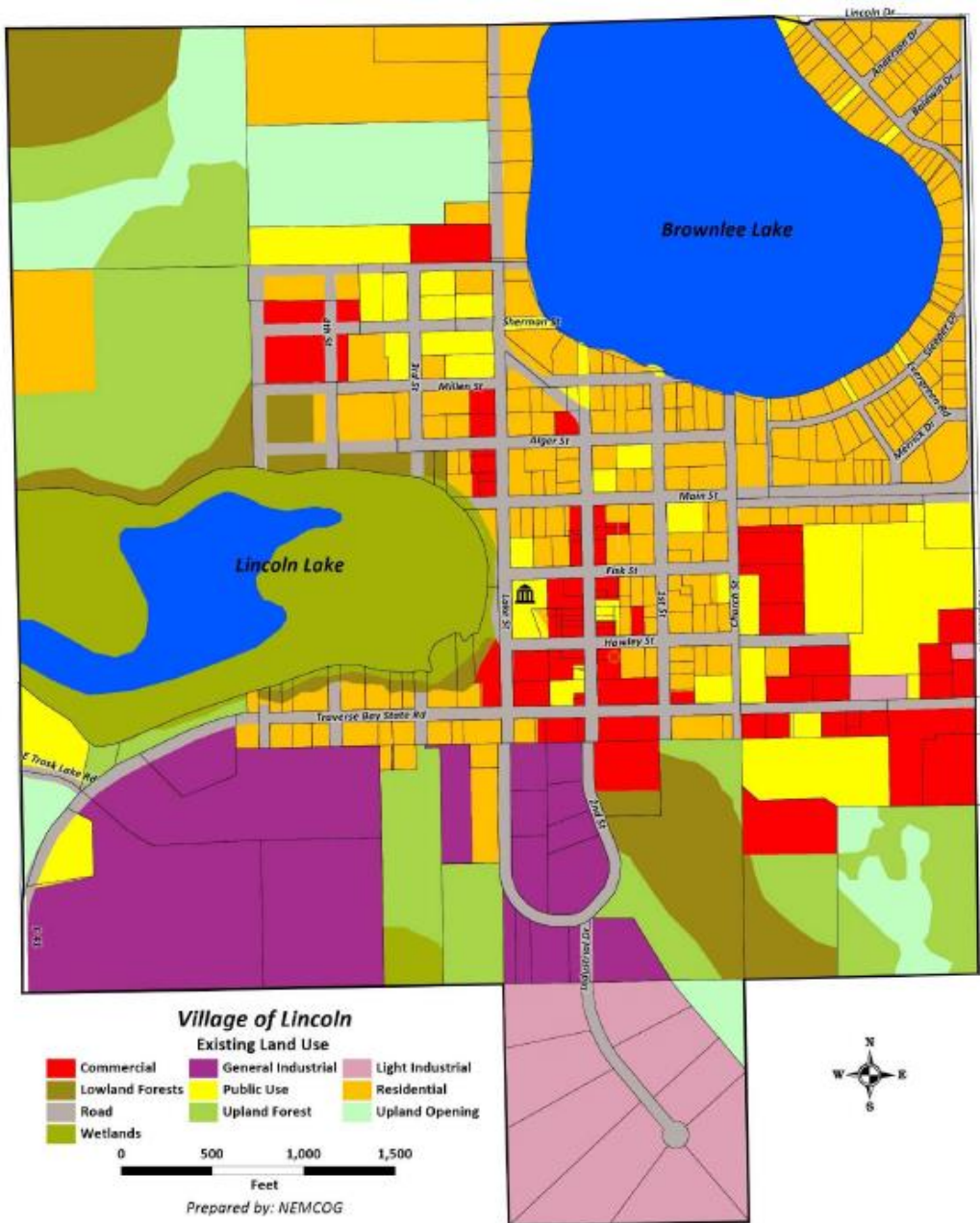


Figure 1-5 Village of Lincoln Land Use

The Village of Lincoln has eight zoning categories: Overlay District (CBD-2), Single Family Residential District (R-1), Conservation Residential District (CR), Mixed Use District (MU), Central Business District (CBD-1), General Business District (B-1), Industrial District (I), and Public Use District (P) (Figure 1-6). The majority of the village is zoned for residential use, while industrial and general businesses uses can be found in the southern portion of the village and along Fourth Street/W. Millen Street.

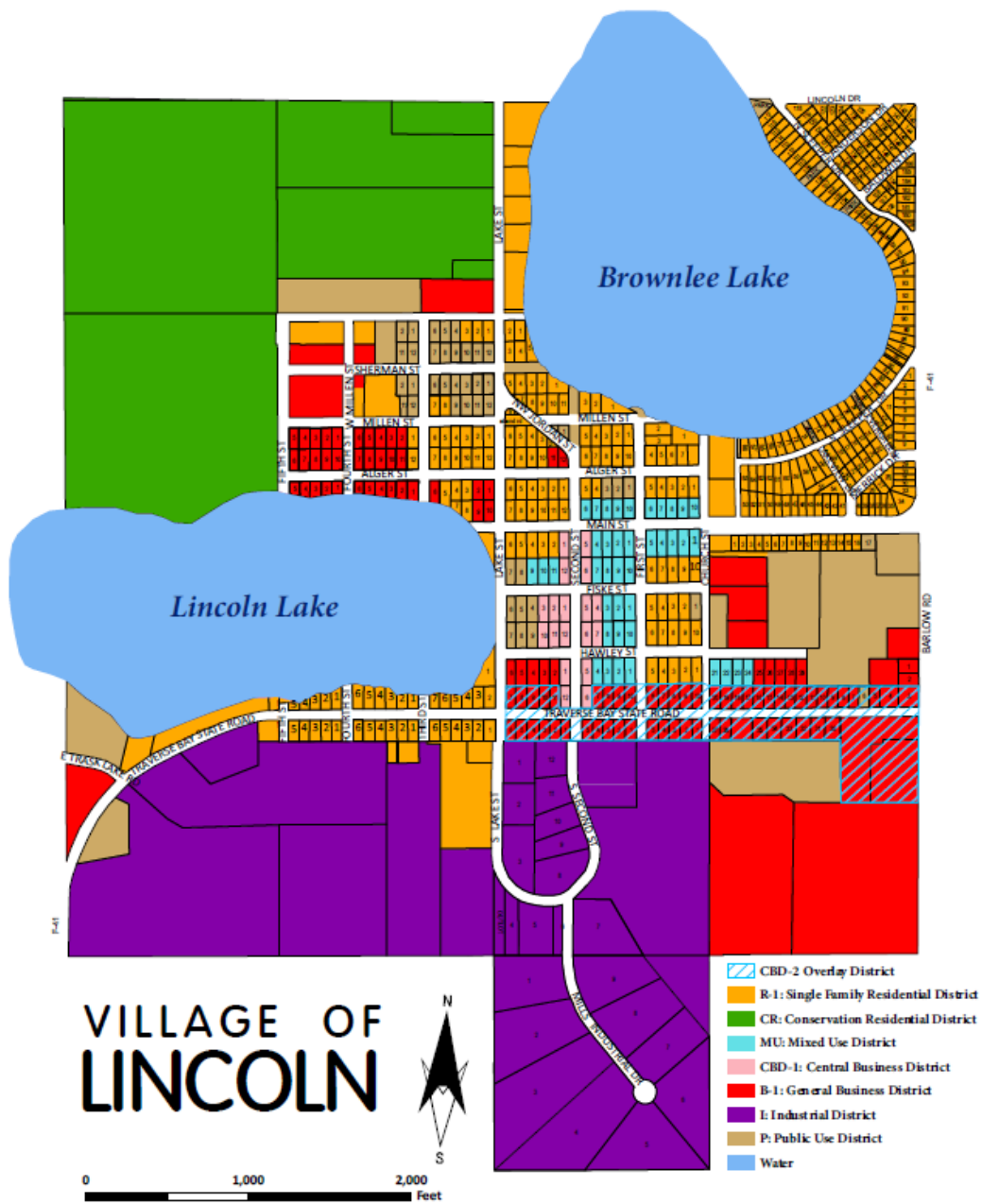


Figure 1-6 Village of Lincoln Zoning Districts

Chapter 2

Administrative Structure

Administration

The Village of Lincoln is governed by a nine-member Village Council consisting of a president, clerk, treasurer, and six trustees (Figure 2-1). These elected positions are chosen by registered voters in at-large elections held every other November. The terms of office for the president, clerk, and treasurer are two years; while, the terms of office for the trustees are staggered in two- and four-year terms.

The Village Council adopted bylaws that determine the order of business and the method of conducting regular municipal business. Meetings are conducted using *Robert's Rules of Order*. A simple majority of the trustees must be present when the determination of an issue requires a vote. The Village's parks and recreation facilities are under the direct control of the Village Council.

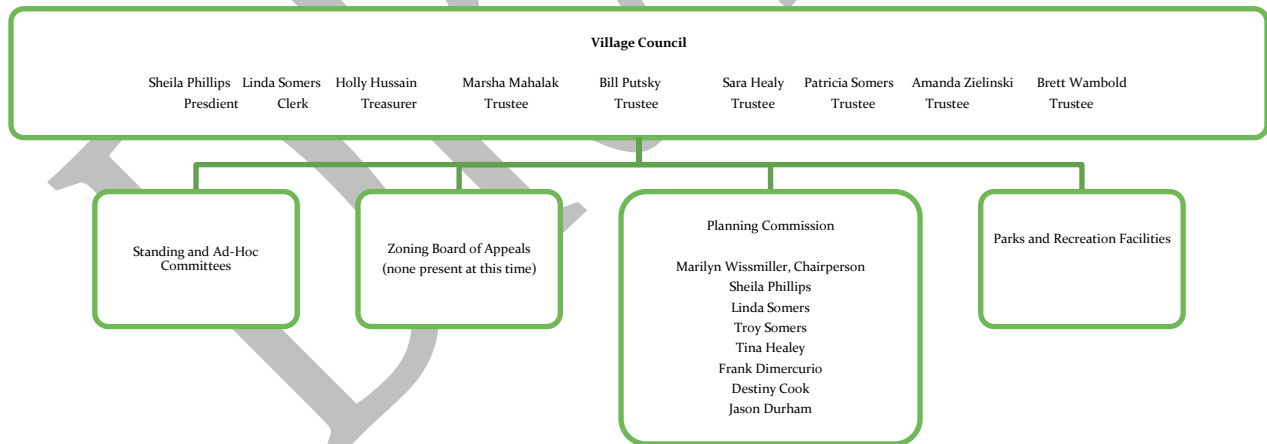


Figure 2-1 Village of Lincoln Administration Organizational Chart

Planning Commission

The Village of Lincoln Planning Commission is a seven-member body that contributes to the local planning process (Figure 2-1). The planning commission is in charge of overseeing the master plan, recreation plan, capital improvement plan, floodplain ordinance, and zoning and planning ordinance.

Department of Public Works

The Village of Lincoln employs one full-time person to fulfill the duties of the Department of Public Works, which includes maintaining the park system. In addition to the full-time staff member, one part-time seasonal person is hired.

Relationships with Other Agencies and Groups

Numerous organizations are involved with the improvement and operation of the recreational facilities within the Village of Lincoln.

Lincoln Downtown Development Authority (DDA)

In September 1985, the Lincoln Village Council established the Lincoln Downtown Development Authority (DDA), which is a publicly funded body (Table 2-1). The purpose of the DDA is to correct and prevent urban deterioration, and encourage economic development, neighborhood revitalization and historic preservation. The DDA is involved in the enhancement of recreational facilities that coincide with its purpose.

Dennis Kruttlin	Chairman
Joe James	Vice Chairman
Karen Godi	Secretary
Evelyn Good	Treasurer
Eric Monnier	Board Member
Mark MacNeil	Board Member
Kathy Jo Schwartz	Board Member
Rich Gillies	Board Member
Shelia Phillips	Village Council Representative

Lincoln Lions

The Lincoln Lions is a community service organization that works to address the needs of the community. The Lions provide funding and labor to complete recreation-related projects.

Lincoln Area Multi-Use Pathway Steering Committee

The Lincoln Area Multi-Use Pathway steering committee was formed in 2004 to establish and maintain a non-motorized multi-use bike and pedestrian pathway in the Lincoln area. The purpose of the pathway is to encourage safe and healthy exercise, connect the downtown with residential and recreational areas, and connect the village to the coastal pathway along the U.S. 23 Heritage Route.

Friends for Flights of Imagination

The Friends for Flights of Imagination is a volunteer effort to maintain, protect, expand, and promote the public play area. The play area enhances the recreational opportunities for the residents of Alcona County and the visitors to the Village of Lincoln.

Brownlee Lake Association

The Brownlee Lake Association, a non-profit, was formed by riparian property owners, village residents and businesses. The lake association does the following:

- Collects and disseminates information about Brownlee Lake
- Works collaboratively as a membership and in conjunction with the government and other organizations to preserve Brownlee Lake
- Plans and executes programs to restore and preserve Brownlee Lake's water quality
- Provides the public with information about the uses of Brownlee Lake
- Reviews and submits proposals to administrative and legislative bodies considering statutes, ordinances and regulations that impact riparian property owners and Brownlee Lake
- Fundraises to pay for scientific and technical testing of the lake

The association strives to remove the organic slurry from the lake without disturbing the natural lake bed; thus, restoring the fishery. To meet this goal, it may take between five to ten years and cost between \$300,000 and \$500,000 depending on fundraisers, contributions, and government and grant monies.

Finances/Park & Recreation Maintenance: Current Funding

Funding for park maintenance and improvements comes from the Village of Lincoln's General Fund (Table 2-2). Other recreational improvement funding sources include grant opportunities with other agencies, private foundations, community service organizations, and community fundraising groups.

The current year and projected annual budgets for parks operations and maintenance, recreation planning, and capital improvements are listed below:

Table 2-2: Insert Budgets

Chapter 3

Recreation Inventory

An inventory of recreation facilities available in the Village of Lincoln was completed and includes Village of Lincoln-owned facilities, publicly-owned facilities, and privately-owned facilities within the village, and other recreational opportunities outside of the village boundaries. The Village of Lincoln-owned facilities were evaluated for barrier-free accessibility (Figure 3-1).

A description of the barrier-free accessibility rating criteria:

Accessibility Assessments - An assessment of the accessibility of each park to people with disabilities. This assessment must consider the accessibility of both the facilities themselves (as appropriate), as well as the access routes to them. The barrier-free accessibility information and sources of assistance given in appendices B and D of the MDNR Recreation Plan Guidelines document should be consulted when making this assessment. At a minimum, use the following ranking system for each park:

- 1 = none of the facilities/park areas meet accessibility guidelines
- 2 = some of the facilities/park areas meet accessibility guidelines
- 3 = most of the facilities/park areas meet accessibility guidelines
- 4 = the entire park meets accessibility guidelines

Inventory Procedures

The methods used by NEMCOG staff to compile this recreational inventory include verification and compilation of information from the previous recreation plan, site visits, compilation of information provided by village officials, volunteer groups, and the Planning Commission. Compiled information was compared to existing information to ensure consistency and/or accuracy.

Village of Lincoln Recreation Inventory

Barlow Road Park/Flights of Imagination Playscape

Barlow Road Park is the primary recreational facility that serves the Lincoln area. It is located west of F-41 (Barlow Road) and north of M-72 on 11 acres. The park provides recreational opportunities, including a basketball and tennis court, two fenced softball diamonds with dugouts, a skating rink maintained by the Lions Club in the winter, and the Flights of Imagination public playscape. It has barrier-free restrooms that are open seasonally, two restrooms that are open year-round, two grills, and nine picnic tables.



The Flights of Imagination Playscape was spearheaded at the grassroots level and opened in September 2000. It consists of a large castle with slides, swings, towers, suspension bridge, and monkey bars. It also has a “tot lot” for children ranging in age from 2-5 years old, where there are tyke-sized swings, a train and depot, bouncy bridge, and low monkey bars. Parents can watch their children from park benches.

Type: Community Park

Service Area: Village of Lincoln

Barrier-Free Accessibility: 2; This facility contains seasonal use accessible restrooms adjacent to the ballfields. The Flights of Imagination Playscape provides barrier-free accessibility. The accessibility needs of Barlow Road Park/Flights of Imagination Playscape are evaluated on an ongoing basis.



Barlow Park: Tennis Courts, Ballfield, Restroom and Concession Stand



Flights of Imagination

Brownlee Lake Park (Village of Lincoln Municipal Beach)

Brownlee Lake Park (Village of Lincoln Municipal Beach) is primarily used as the public beach and swimming location in the village. It is located east of 2nd street and north of Millen Street. The park is approximately one acre with 75-100 feet of sandy beachfront on the southwest side of Brownlee Lake.



Brownlee Lake Park (Village of Lincoln Municipal Beach) is owned and maintained by the Village. The Michigan Department of Natural Resources permits the village to use buoys to define the swim area and keep motorized vehicles from entering it.

Local groups have volunteered to improve the beach. The Lions Club volunteered to remove and replace both swimming platforms as of December 2006. Additionally, the Brownlee Lake Association members, Lions Club, and other community members have agreed to pay for re-sanding the beach, tree trimming, and painting the railings and trash barrels. The estimated cost of this upgrade is approximately \$8,000 in addition to volunteer labor.

In 2009, the village obtained permits from the Michigan Department of Environmental Quality (now the Michigan Department of Environment, Great Lakes, and Energy) to test the water and install an aeration system in Brownlee Lake. In 2011, Savin Lake Services was contracted to install components for the planned aeration system. The components included seven shore-based electric air compressors, 22,000 feet of weighted air distribution hoses, and 28 air diffuser discs or pods. The system allows for air to be pumped from the compressors through the hoses to the pods, which creates a column of small bubbles that rise to the surface of the lake. These bubbles create a large circular motion that causes the water on the lake bottom to move to the water's surface to be re-oxygenated. This process speeds up the decomposition of organic material, which improves the lake's water quality and creates a healthier fishery.

Type: Mini-Park

Service Area: Village of Lincoln

Barrier-Free Accessibility= 1; The accessibility is evaluated on an ongoing basis.



Brownlee Lake Park (Village of Lincoln Municipal Beach)

Brownlee Lake Public Access Site

The Brownlee Lake Public Access Site provides access to Brownlee Lake and is located at the end of Sherman Street. The site consists of a concrete launch ramp, a dock, a picnic table, and recreational signage.



Future upgrades for this site include a slide-in boat launch, a slide-in boat dock, and a pavilion with picnic tables. These upgrades will improve the accessibility to Brownlee Lake and extend the park's use during all types of weather.

Type: Public access site; mini-park

Service Area: Village of Lincoln

Barrier-Free Accessibility = 1; The accessibility needs are evaluated on an ongoing basis.

Lincoln Lakefront

The primary use of the Lincoln Lakefront is to observe waterfowl and songbirds. The lakefront is located across the street from the Lincoln Municipal Building and Fire Hall. The village owns a portion of the lakefront that is approximately 600' long by 30' deep.



Type: Natural Resource Area

Service Area: Village of Lincoln

Barrier-Free Accessibility= 1; Since this area is undeveloped, accessibility issues do not exist. The future development and accessibility is evaluated on an ongoing basis.

Railroad Park (Veteran's Park)

Railroad Park (Veteran's Park) contains one of the primary playgrounds in the village and is located across the street from Lincoln Lake and next to the Lincoln Municipal Building & Fire Hall.



The park contains picnic tables, grills, a fire pit, a balance beam, a climbing structure, a sandbox, a slide, swings, and a basketball court. There is also a war memorial dedicated to the village residents who have served in the armed forces.

Type: Neighborhood Park

Service Area: Village of Lincoln

Barrier-Free Accessibility = 1; The accessibility needs are evaluated on an ongoing basis. There is a paved parking lot, but no paved walkways.

Lincoln Municipal Building and Fire Hall

The Lincoln Municipal Building and Fire Hall is the governmental center for the village and is located at the corner of Lake Street and West Fiske Street in downtown Lincoln. The building is a voting precinct and is used for Village Council and other meetings. The facility contains a conference room, restrooms, a basketball court, and a garage for three fire trucks and a First Responder vehicle.

Type: A special use facility

Service Area: Village of Lincoln

Barrier-Free Accessibility = 4; The Lincoln Municipal Building and Fire Hall conform to state and federal accessibility standards. The accessibility needs of this facility continue to be evaluated on an ongoing basis.

Municipal Service Garage

The Municipal Service Garage is located adjacent to the Village Municipal Building and Fire Hall. It is 40' x 60' and is used for maintenance and equipment storage.

Type: A special use facility

Service Area: Village of Lincoln

Barrier-Free Accessibility = 1; This facility is not open for public use. The accessibility needs of this facility are evaluated on an ongoing basis.

Vacant Lots

The Village owns three vacant lots at the corner of Hawley and Lake Streets, which are earmarked for future growth needs.

Type: A special use facility

Service Area: Village of Lincoln

Barrier-Free Accessibility = 1; This facility is not open for public use. The accessibility needs of this facility are evaluated on an ongoing basis.

Other Publicly-Owned Property

Alcona County Senior Center (Lincoln Memorial Center)

The Alcona County Senior Center (Lincoln Memorial Center) is a multi-use center that is located in downtown Lincoln on a 78' x 330' lot. The facility was built in 1940 and is 10,800 square feet with two stories. The facility provides a gathering place and activities for senior citizens and hosts a congregate meal center.



Alcona County conveyed the facility to the Alcona County Commission on Aging. The facility was renovated with a Recreation Bond grant over 25 years ago and consists of a fully-equipped state approved kitchen, dining room with 130 seats, offices for Commission on Aging staff, a small meeting room, ADA approved restrooms, a raised stage, a storage area, and a hardwood dance floor. The Senior Center is available for public and private rentals.

The senior center needs improvements to continue providing services, which include roof repairs, site work to prevent erosion and washouts, landscaping, picnic table and grill additions, window replacement, kitchen improvements and enhancements, addition of recreational equipment and supplies geared to the population's needs, and an enhanced main entrance for better accessibility.

Type: A special use facility

Service Area: Village of Lincoln

Barrier-Free Accessibility = 3; The accessibility needs of this facility are evaluated on an ongoing basis and any needed improvements are addressed by the Alcona County Commission on Aging.

Lincoln Train Depot

The Lincoln Train Depot is recognized as a Michigan Historic Site since it was used between 1896 and 1929. It is located across the street from the municipal building and Lincoln Lake.



The Village of Lincoln Downtown Development Authority conveyed the Lincoln Train Depot to the Friends of the Lincoln Depot, who are sponsored by the Alcona Historical Society. The group intends to restore and preserve the facility as a museum and visitor center. Currently, the initiative is in progress with many of the improvements funded through private monetary donations, merchants' donations of building materials, local funding from the Lincoln Downtown Development Authority, and labor supplied by community volunteers.

Type: A special use facility

Service Area: Village of Lincoln

Barrier-Free Accessibility = 2; The accessibility needs of this facility are continually evaluated.

Alcona County Library, Lincoln Branch

The Lincoln Branch of the Alcona County Library is located at 330 Traverse Bay Road and contains books, magazines, audio books, videos/DVDs, a meeting and tutoring room, and high-speed internet access. In addition, the library provides access to the collections of 16 other library systems and has partnered with the Alcona Historical Society to create an exclusive computer database for public viewing of historic photos.

Type: A special use facility

Service Area: Village of Lincoln

Barrier-Free Accessibility = 4; The facility is handicap accessible. Alcona County addresses the accessibility needs of this facility.

Lincoln Area Multi-Use Pathway (LAMP)

The primary purpose for the Lincoln Area Multi-Use Pathway (LAMP) is to provide pedestrians and bicyclists with a safe route to recreational areas, downtown shopping, historical points of interest, and cultural events in the village.



Type: A designated downtown sidewalk and trail system through Recreation Park

Service Area: Village of Lincoln

Barrier-Free Accessibility = 2; Portions of the trail are handicap accessible. The accessibility needs are evaluated on an ongoing basis.

DNR Field Office

The DNR Field Office is a local fire control headquarters building for the surrounding state and national forests. It is used as a deer check station during the fall hunting season, and as a storage facility for park maintenance equipment.

Type: A special use facility

Accessibility: This facility is not open for public use. The accessibility needs of this facility are addressed by the Michigan Department of Natural Resources.

Alcona Community Schools

The local school system has a multi-use complex that consists of 54 acres and includes a football field, a practice football field, a baseball diamond, a softball diamond, a playground area, an Outdoor Environmental Study Center (small amphitheater and log cabin), a signed nature trail in the adjacent woodlot, an elementary school gymnasium, and a secondary school gymnasium. The school system is in the process of adding a classroom wing to the middle school, a new auditorium, a new bus garage, and improving and upgrading the track, soccer and football fields, and adding separate practice areas. At the elementary school, some of the outdoor playground areas are being redesigned to address safety issues.

Adjacent to Alcona Elementary School is a 3,000 square foot building that is under a long-term lease with Northeast Michigan Community Service Agency, Inc. The facility provides Head Start, early childhood development and parenting services, and consists of two classrooms, a conference room, three restrooms, a kitchen and an office.

Type: School Park with limited community use (must have proper authorization from the Alcona Community Schools)

Barrier-Free Accessibility = 3; The accessibility needs of the recreational portions of this facility are monitored and addressed by the Alcona Public School System.

Alcona Recreation Area (ARA)

This facility is a 121-acre county-owned recreation area. It is located in the northwest corner of Harrisville Township across the road from the Village of Lincoln. The Alcona County Fair, Lincoln 250 Snowmobile Enduro Race, and school, club, and countywide activities are held at this location. The facilities consist of a half mile dirt track for trotter and snowmobile races, four pole barns, an arena office and maintenance building with modern restrooms, a 300' complete BMX track, an observation and broadcast booth, a gate house, two wells, four irrigated soccer fields, water and septic systems, six portable toilets, and 80 acres of undeveloped forest land.

Type: A community park/natural resource area. This multi-use facility serves a broad range of functions.

Barrier-Free Accessibility = 2; The accessibility needs of this facility are evaluated on an ongoing basis.



Figure 3-1 Village of Lincoln's Recreational Facilities

Privately-Owned Recreation Properties

Greenbush Golf Course: Located four miles south of Harrisville on U.S. 23, this nine-hole, Par 34 facility offers club rental.

Loggers Trace at Springport Hills Golf Course: Located approximately 1.25 miles south of Harrisville and west of U.S. 23 on Spruce Road. Loggers Trace is an 18-hole course with a Par 72 layout, while Springport is a nine-hole course with a Par 36 layout that is open to the public.

Eighty-Acre Reserve: Owned by Samuel Andreasen in Harrisville Township. It is listed under the Community Federal Reserve (CFR) Act and is open to public hunting.

Recreation Opportunities Outside of the Village Boundaries

Residents of the Village of Lincoln can also utilize recreational facilities outside of the village. Listed below are the public and private recreational facilities in the vicinity of the Village of Lincoln. Complete information on all public and private recreational facilities in Alcona County can be found in the Alcona County Recreation Plan.

Alcona Township	
Public	Private
Black River/Lake Huron Site	Lost Lake Woods Club
Hubbard Lake Access Sites	
Black River Recreation Area	
Negwegon State Park	
Huron National Forest	

Caledonia Township	
Public	Private
Hubbard Lake Access Sites	Paul Bunyan Campground
Hickey Hill	Monarch Golf Course
Spruce Park	Will's Gun Shop
	Hubbard Lake Marine
	East Bay Outfitters
	Walleye Fish-Rearing Ponds
	Churchill Pointe Inn

Curtis Township	
Public	Private
Indian Lakes Park	Alcona Canoe Rental & Campground
Alcona Park	Middleton Campground
Vaughn Lake Public Access	Eagle Ridge Golf Course
North Lake (trailhead for snowmobiles)	Au Sable National Scenic River
	Huron National Forest

Greenbush Township	
Public	Private
Cedar Lake Access Site	Greenbush Golf Course
Ten Acres	Timberlakes Subdivision
Greenbush Recreation Area	
Greenbush Country School	
Swart House	
Two Lake Huron access sites	

Gustin Township	
Public	Private
Alcona Community Schools	
Former Memorial Hall	

Harrisville Township	
Public	Private
Harrisville Recreation Area	Springport Hills Golf Course
Harrisville State Park	80-acre Reserve
Alcona Recreation Area	

Hawes Township	
Public	Private
Public access site (West Branch River)	Former Timber Creek Resort
	Deep Woods Taxidermy
	White Pines National Golf Club
	Jewell Lake

Haynes Township	
Public	Private
Sturgeon Point Lighthouse	Cedarbrook Trout Farm
Bailey School	

Mikado Township	
Public	Private
Bruce Park	Chippewa Indian Settlement
Ball Parks	Indian Mission Church
Ten Acres	
Pine River National Forest Campground	
Vandercook Trailhead	

Millen Township	
Public	Private
Barton City Community Park	Barton City Eagles Club
Jewell Lake Campground	
Horseshoe Lake Campground	
Reid Lake Foot Travel Area	
Sprinkler Lake Education Center	

Mitchell Township	
Public	Private
Mitchell Township Park	
Hoist Lake Area	
O'Brien Lake	
McCollum Lake State Forest Campground	
Au Sable River	

City of Harrisville	
Public	Private
Harrisville Harbor and Harbor Park	Village Lanes Bowling Alley
Harrisville Mill Pond	J & J Campground
Veteran's Club Property	Old Railroad Depot
Tennis Courts/Pavilion/City Offices	Several private fishing related businesses (e.g. bait and tackle shops, charter boat services, etc.)
Dock Street Road-End	
Scenic Overlook, Foot of Main Street	
Craftmaker's Cabin and Property	
City Airport	
Harrisville Heritage Route Trail	
Michigan DNR Public Access site	

Descriptions of significant recreational sites in Alcona County can be found below (the numbers represent the facility's location on Figure 3-2):

ALCONA COMMUNITY SCHOOL DISTRICT (#1): Alcona Community School District encompasses approximately 426 square miles in Alcona County. The 54 acre rural school campus houses Alcona Elementary School, Alcona Middle School, Alcona Community High School, Lakewood Academy Alternative Education Center, NEMCSA Headstart, a transportation center, outdoor athletic complex, and a 650 seat community auditorium. Recreational and educational facilities available for community use include three gymnasiums, a weight room, an 8-lane all-weather rubberized track, baseball diamond, softball diamond, football/soccer stadium, football practice field, five locker rooms, two playground areas, two media centers with computer facilities, four computer labs, one interactive television lab, a mobile interactive television unit, two cafeterias, a fully-equipped 650-seat auditorium with stage, light and sound booth, and dressing rooms, and conference and classrooms throughout the district. Community members are welcome to access district facilities through a facility use policy developed by the Alcona Community Schools Board of Education and with district approval.

ALCONA RECREATION AREA (#2) is a 123-acre county-owned site located in the northeast corner of Harrisville Township. The area is the site of the Alcona County Fair as well as the Lincoln 250 Enduro Snowmobile Race. The location has a half mile dirt track for trotter and snowmobile racing, a Motocross track, four pole barns, four animal barns, a multipurpose building for displays, meetings and other events, a horse arena and show arena, an office and maintenance building with flush toilets, a 300' complete BMX track, an observation/broadcast booth, a gatehouse, two wells, four irrigated soccer fields, water and sewer, six portable toilets, and 80 acres of undeveloped forest land. It also boasts a Braille Nature Trail.

STURGEON POINT LIGHTHOUSE (#3), located in Haynes Township, is a major tourist attraction. The Alcona Historical Society offers summer tours of the still-operating, federally-owned facility. The State of Michigan owns the 40 acres surrounding the lighthouse and has no immediate plans for development. **Old Bailey School**, one of the few remaining one-room, log schoolhouses in Michigan, is situated near the lighthouse and is open to the public.

HARRISVILLE STATE PARK (#4) located in the City of Harrisville and **ALCONA PARK (#5)**, located near Glennie in Curtis Township, offer modern camping facilities.

NEGWEGON STATE PARK (#6) is an unimproved state park, which currently includes 3,378 acres of land in Alcona Township (Alcona County) and in Sanborn Township (Alpena County). Present facilities allow for primitive camping and provide hiking and nature trails.

The **GREENBUSH RECREATION AREA (#7)**, approximately 10 miles south of the City of Harrisville, is a 34-acre site with an open-air pavilion, two ball fields, a children's playground, nature trails and picnic areas. Bathroom facilities are also available.

THE PINE RIVER NATIONAL FOREST CAMPGROUND (#8), located at the former state trout-rearing ponds in the Huron National Forest in Mikado Township, offers eleven primitive campground sites with toilets and hand-pumped water, a picnic pavilion and grills. Three recreation sites are maintained by the U.S. Forest Service in Millen Township: **JEWELL LAKE CAMPGROUND (#9)**, **HORSESHOE LAKE CAMPGROUND (#10)**, and **REID LAKE QUIET AREA (#11)**. Each has primitive campsites, hand-pumped water, and picnic & foot trail areas. The Reid Lake site also offers over six miles of cross-country ski trails.

THE HOIST LAKE AREA (#12), maintained by the U.S. Forest Service in Mitchell Township, is approximately 22 miles west of the City of Harrisville. It has seven small lakes and over 20 miles of cross-country ski trails.

GABIONS CAMPGROUND (#13) in Mitchell Township offers camping and RV sites.

FOREST LAND: Approximately 74.5% of the land in Alcona County is forested, with State and Federal Forest areas comprising approximately 35.6% of it. Most of these areas are open to the public for hunting, hiking, camping and other outdoor sporting activities. Facilities on federal forests are utilized primarily for primitive camping, hiking, and wildlife observation.

GOLF: Alcona County has three public nine-hole golf courses: Greenbush Golf Course in Harrisville Township near Greenbush, Springport Hills Golf Course south of Harrisville, and Monarch Hills in Caledonia Township. There are also three 18-hole courses: Loggers' Trace at Springport Hills, Eagle Ridge in Glennie, and White Pine National Golf Course in Spruce. Blackshire Hills, part of Lakewood Shores, is situated to the south in Oscoda. In addition, there is an 18-hole private course located in Lost Lake Woods Club.

SNOWMOBILE TRAILS: There are 90 miles of groomed trails in Alcona County, while Oscoda County has 121 miles and Iosco County has 94 miles.

TRAILS: Three major hiking trail systems are located in Alcona County – the Hoist Lakes Foot Travel Area, Reid Lake Quiet Area, and approximately 14 miles of the Shore to Shore Trail passes though the southwestern portion of the county on its way from Lake Huron to Lake Michigan. Hoist Lakes (over 20 miles of trails) and Reid Lake (12 miles of trails) are footpaths for hikers and skiers while the Shore to Shore Trail is an unpaved multi-use trail for mountain bikes, hikers, and horses.

SHIPWRECKS: The boundaries of the Thunder Bay National Marine Sanctuary include the waters off Alcona, Alpena, and Presque Isle Counties to the Canadian border. The sanctuary was designated to protect a significant collection of over 200 shipwrecks that lie in Lake Huron. Visitors can fish, kayak, or snorkel the wrecks.

Recreation Outside of Alcona County

In addition to recreation within Alcona County, Village residents have access to recreational opportunities in Alpena, 32 miles to the north, as well as Oscoda, 16 miles south. The City of Alpena is the largest city in northeast Michigan and offers 22 recreational properties. Community-based recreation in Alpena includes Plaza Pool at Alpena High School, Northern Lights Arena for hockey and ice skating, and many community parks with swimming and fishing access.

Oscoda High School has an indoor swimming pool which is open for public use on a limited basis; the community also has a waterfront park on its Lake Huron beach with playground equipment and tennis courts.

A second lake-side park area, located just north of Oscoda on U.S. 23, offers picnicking and swimming. Several campgrounds are located in or near the Huron National Forest, including the Old Orchard Campground on the Au Sable River. The Lumberman's Monument area on the River Road offers a visitor's center with informative and educational displays depicting lumbering days, a gift shop, interpretive center, the impressive monument itself, numerous scenic hiking and walking trails, and a spectacular view of the Au Sable River. Picnicking and boating are also available at Van Etten Lake in Oscoda.

It is important to note that while all of these regional recreational opportunities are available to residents of the Village of Lincoln, many require fees and all require travel in order to access them.

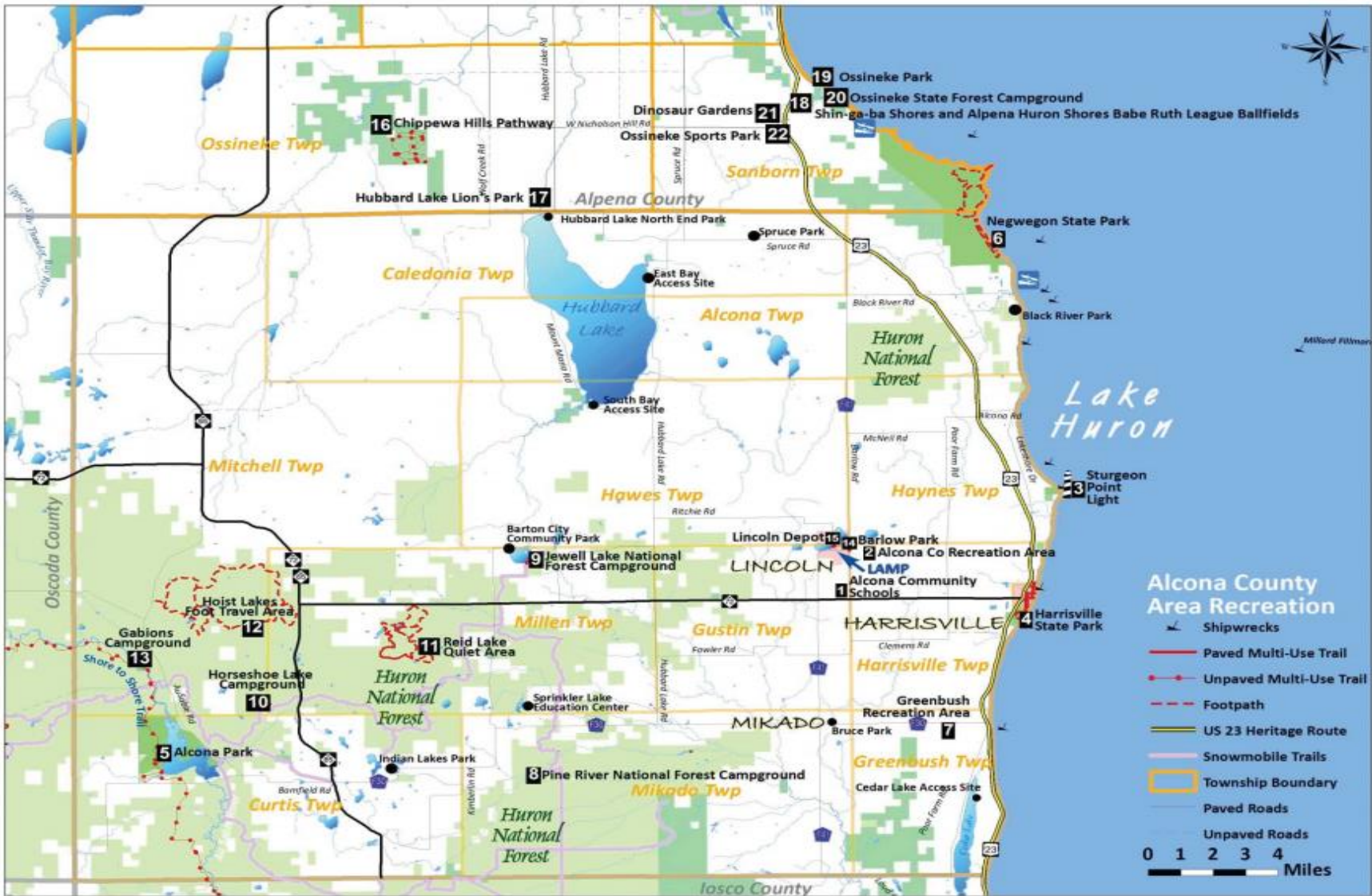


Figure 3-2 Alcona County Recreational Facilities

Chapter 4

Planning and Public Input Process

The Village of Lincoln Planning Process

Development of a community recreation plan must involve interaction and input from citizens and community groups. The Planning Commission was the lead entity in developing the Village of Lincoln Recreation Plan. The Planning Commission and Village Council meetings were open to the public with time allocated for comments. A timeline for the development of the recreation plan update is as follows:

SCHEDULE

April 2019

The Village of Lincoln contracts with Northeast Michigan Council of Governments (NEMCOG) to update their recreation plan.

June 2019

NEMCOG staff reviewed the expiring plan and made corrections with available public information.

September 2019

A survey was used to gain public input and feedback about recreational opportunities in the Village of Lincoln. The survey was made available on the Village of Lincoln's website and the NEMCOG's website. A press release was published in the local newspaper.

October 2019

NEMCOG and the Planning Commission reviewed and updated the plan's chapters to reflect the current state of recreation in the village.

November 2019

The draft plan is posted for a 30-day public review online at the Village of Lincoln's website. Notice of the plan availability and December 4, 2019 public meeting was published in the local newspaper.

December 4, 2019

A public meeting was held. The Planning Commission meeting was held.

January 6, 2019

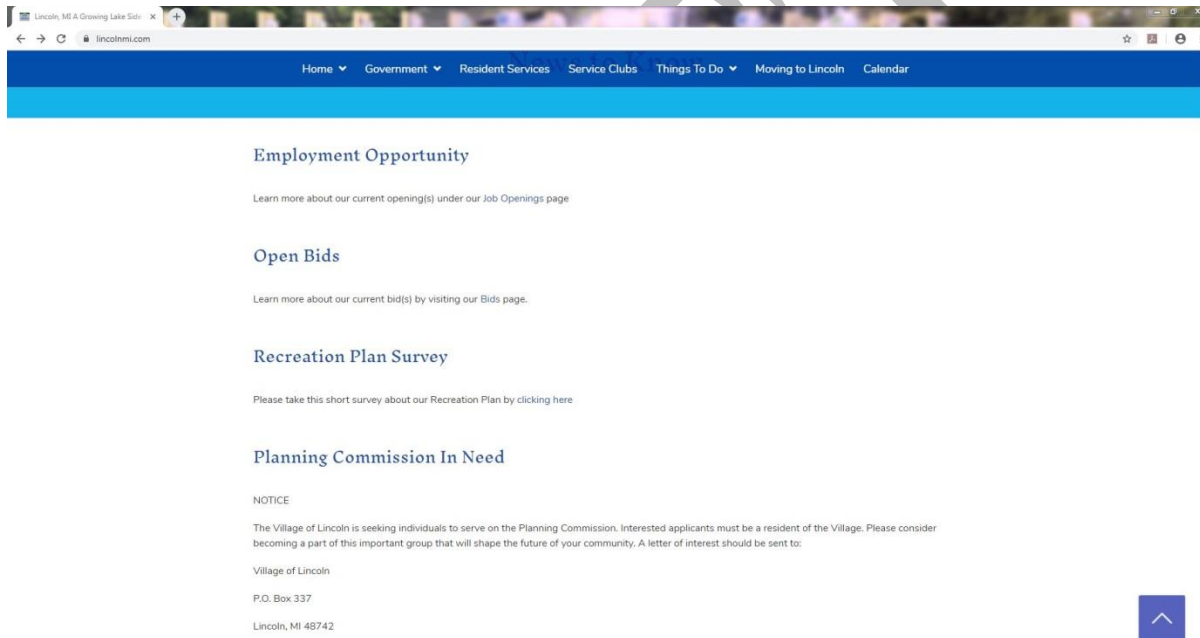
The Village Council meeting was held.

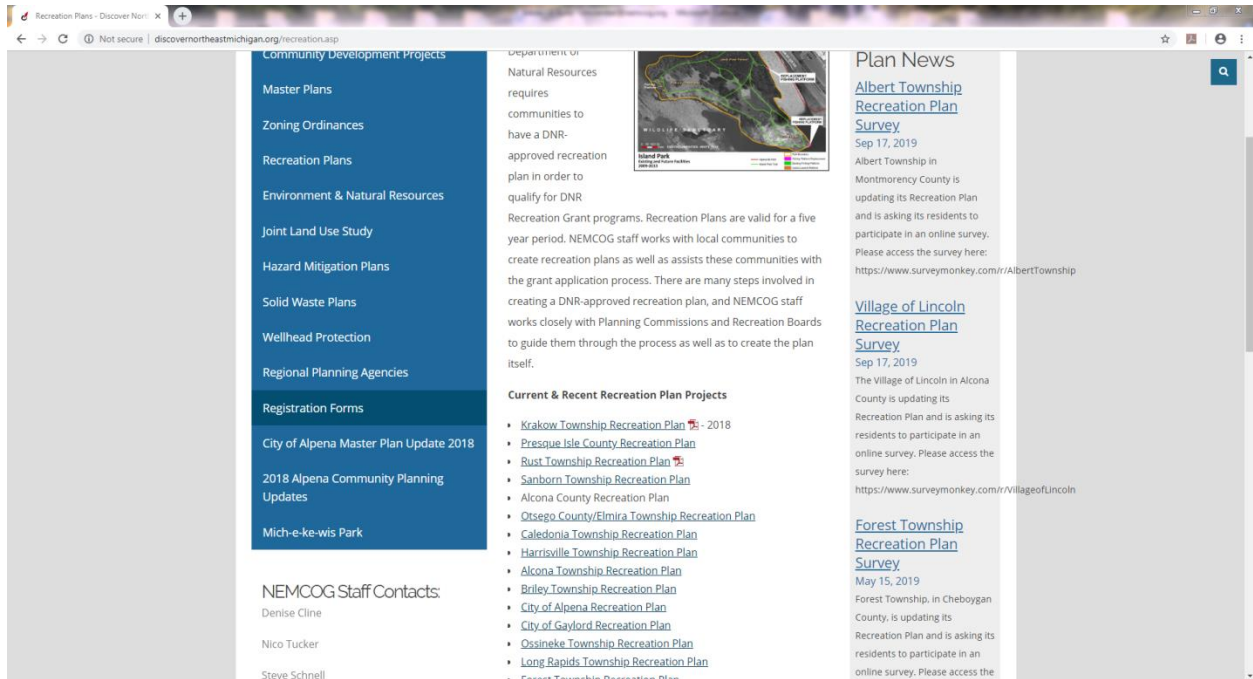
Public Input

Citizen opinion on recreation priorities is key to the development of a recreation plan. An online survey was provided for citizens to provide input about recreational facilities. The Village of Lincoln created and publicized the survey. A total of 43 people responded to the survey. The survey results can be found in Appendix A.

Because of the small size of the Village of Lincoln, the Planning Commission felt the community was well-represented throughout the process especially in the online survey. After all public input was gathered and recorded, the Planning Commission met to prioritize projects for the Action Plan and to develop a capital improvements plan.

Recreation Survey Publicity





Public notice for the 30 day review period for the recreation draft plan and the public meeting

Planning Commission resolution to recommend adoption of the plan (meeting minutes)

Village Council adoption resolution and meeting minutes for the recreation plan

MDNR submittal letter

Alcona County submittal letter

NEMCOG submittal letter

Chapter 5

Goals, Objectives, and Action Plan

Goals and Objectives

The goals and objectives were developed from the online survey and input from the Planning Commission.

1. To protect, promote and preserve the area.
2. To develop and maintain strong local government involvement in recreational and tourism planning and projects.
3. To actively improve the recreational resources in the community.
 - a. Implement the action plan to improve the parks in the Village of Lincoln by making them more accessible and increasing their usage.
4. Provide a balance of recreational amenities which are oriented to the aging population to increase the desirability of the community to retirees.
5. Provide recreational amenities which are oriented toward the younger population and families in order to increase the livability of the community to attract young families to the area and retain older youth.
 - a. Encourage the development of community baseball and softball teams through improvements to existing ballfields at Recreation Park.
 - b. Develop a recreational facility geared toward teenagers that includes a skate park and basketball courts.
6. Support cooperative regional recreation planning and development with Alcona County, the Michigan Department of Natural Resources, and other surrounding communities.
 - a. Support the expansion of snowmobile trails into the Village of Lincoln.
 - b. Support the expansion of the Lincoln Area Multi-Use Pathway.
7. Improve the quality of life for residents and bring visitors to the Village of Lincoln by maintaining, improving and expanding recreation within the village and surrounding areas by working cooperatively with local and state governmental agencies, community service agencies, and local businesses.
 - a. Encourage residents and visitors to use the existing parks and trails through improvements that will increase the availability of recreational amenities.

8. To encourage tourism as an economic resource for the community, yet recognize the need to provide other recreational opportunities to the residents.
 - a. Establish wayfinding and site signage in the Village of Lincoln as well as establishing directional signage in outlying areas to direct visitors to Lincoln parks.
 - b. Develop a recreational brochure and map for the Village of Lincoln.
9. Improve the overall local economy by enhancing the livability of the community in order to attract entrepreneurs and encouraging the creation of new tourism-based jobs.
10. To provide outdoor recreational facilities for the enjoyment of local residents, sports enthusiasts and visitors to the Village of Lincoln.

Barlow Road Park/Flights of Imagination

Goal: Enhance the recreational opportunities at Barlow Road Park/Flights of Imagination to encourage its establishment as a primary recreational facility in the Village.

1. Objective: Provide amenities to improve the overall usability of Barlow Road Park/Flights of Imagination.
 - a. Action: Improve playground with motor skill development stations and cause & effect learning stations
 - b. Action: Improve transitional pathways/ramps
 - c. Action: Resurface the playground
 - d. Action: Improve landscaping and site lighting
 - e. Action: Install well
2. Objective: Provide amenities to improve the overall usability of the Barlow Road Park.
 - a. Action: Construct/Install a pavilion with picnic tables and grills
 - b. Action: Improve accessibility and landscaping
 - c. Action: Install new basketball courts
 - d. Action: Resurface tennis courts

Railroad Park

Goal: Enhance the recreational opportunities at Railroad Park to encourage its establishment as a primary recreational facility in the Village.

1. Objective: Provide amenities to improve the overall usability of Railroad Park.
 - a. Action: Construct/Install a gazebo with picnic tables, benches, grills, pathways, pedestrian lighting, trash cans, playground equipment, landscaping and historical marker
 - b. Action: Construct a skate park
 - c. Action: Install benches, statues, and veteran's memorial.

Brownlee Lake Park

Goal: Enhance the recreational opportunities at Brownlee Lake Park to encourage its establishment as a primary recreational facility in the Village.

1. Objective: Provide amenities to improve the overall usability of Brownlee Lake Park.
 - a. Action: Replace swimming platforms, paint railing and trash cans, re-sand beach, trim trees, and install a slide

Lincoln Area Multi-Use Pathway (LAMP)/Snowmobile Trail

Goal: Develop a non-motorized trail system and a motorized trail system to encourage quality of life and promote tourism.

1. Objective: Connect the Lincoln Area Multi-Use Pathway (LAMP) to the surrounding communities.
 - a. Action: Construct Phase II of the LAMP into the Alcona Recreation Area
 - b. Action: Construct Phase III of the LAMP to the U.S. 23 Heritage Route in Harrisville
2. Objective: Connect the Village of Lincoln to the surrounding communities with a motorized trail system.
 - a. Action: Extend and designate a snowmobile route to the Village of Lincoln

Brownlee Lake Public Access Site-Sherman Street

Goal: Enhance the recreational opportunities at the Brownlee Lake Public Access Site to encourage its establishment as a primary recreational facility in the Village.

1. Objective: Provide amenities to improve the overall usability of the Brownlee Lake Public Access Site.
 - b. Action: Construct/Install a 20'x30' pavilion with two barbeque grills
 - c. Action: Add 1 standard and 1 ADA compliant picnic tables
 - d. Action: Improve driveway and parking area

Lincoln Lake

Goal: Enhance the recreational opportunities at Lincoln Lake.

1. Objective: Provide amenities to improve the overall usability of Lincoln Lake.
 - a. Action: Add picnic tables and grills

Village of Lincoln- General

Goal: Promote and increase public awareness of area recreational facilities.

1. Objective: Identify needed resources to increase public awareness of recreational activities.
 - a. Action: Establish a wayfinding program

Goal: Enhance the recreational opportunities in the Village of Lincoln.

1. Objective: Provide amenities to improve the quality of life for residents.
 - a. Action: Create a fenced dog park

Senior Center

Goal: Partner with the Alcona County Commission on Aging to implement projects.

1. Objective: Provide amenities to improve the quality of life for residents.
 - a. Action: Install a sidewalk
 - b. Action: Improve/install landscaping, signage, parking lot improvements
 - c. Action: Construct a covered outdoor structure for games

Capital Improvement Plan

The capital improvement schedule describes what recreational improvements the village would like to pursue over the next five years (Table 5-1).

Table 5-1 Capital Improvement Schedule

Barlow Road Park/Flights of Imagination					
Priority	Site	Proposed Improvement	Estimated Cost	Funding Source(s)	Year*
HIGH	Barlow Road Park/Flights of Imagination	Playground improvement: motor skill development stations, cause & effect learning stations	\$16,000	MDNR; local foundations; Able To Play; Dept. of Community Health; DOC	2024
HIGH	Barlow Road Park/ Flights of Imagination	Transitional pathways/ramps	\$2,000	MDNR; MDOT; DOC	2024
HIGH	Barlow Road Park/ Flights of Imagination	Resurface playground	\$5,000	MDNR; Able To Play.	2021
HIGH	Barlow Road Park/ Flights of Imagination	Outdoor lighting and beautification	TBD	MDNR, local, foundations	2024
HIGH	Flights of Imagination/Ballfields	Well Installation	TBD	MDNR, community service organizations	2021
MEDIUM	Barlow Road Park	Pavilion, picnic tables, grills	\$40,000	MDNR, local, foundations, community service organizations	2023
LOW	Barlow Road Park	Install new basketball courts	TBD	MDNR, local, community service organizations	2024
LOW	Barlow Road Park	Resurface tennis courts	TBD	MDNR, local, community service organizations	2024

Railroad Park (Veteran's Park)

Priority	Site	Proposed Improvement	Estimated Cost	Funding Source(s)	Year*
HIGH	Railroad Park	Gazebo, picnic tables, benches, grills, pathways, pedestrian lighting, trash cans, playground equipment, landscaping, and historical marker	TBD	MDNR; Able To Play; local foundations; community service organizations; Dept. of Community Health; DOC; Alcona Historical Society	2024
HIGH	Railroad Park	Construct Skate Park	\$25,000	MDNR; Dept. of Community Health; DOC; private foundations	2024
HIGH	Railroad Park	Install benches, statues, and veteran's memorial. Move slides.	TBD	MDNR, local, community service organizations	2021

Brownlee Lake Park (Village of Lincoln Municipal Beach)

Priority	Site	Proposed Improvement	Estimated Cost	Funding Source(s)	Year*
HIGH	Brownlee Lake Park	Replace swimming platform, paint railing and trash cans, re-sand beach, trim trees, and install a slide.	\$1,000	Lincoln Lions, Brownlee Lake Association, community member donations, Viking Energy	2020

Lincoln Area Multi-Use Pathway (LAMP)					
Priority	Site	Proposed Improvement	Estimated Cost	Funding Source(s)	Year*
HIGH	Lincoln Area Multi-Use Pathway	Phase II – trail into the Alcona Recreation Area	TBD	MDNR; MDOT; DOC	2024
LOW	Lincoln Area Multi-Use Pathway	Phase III – connect to US 23 Heritage Route in Harrisville	TBD	MDNR; MDOT; DOC	2024
Brownlee Lake Public Access Site-Sherman Street					
Priority	Site	Proposed Improvement	Estimated Cost	Funding Source(s)	Year*
HIGH	Brownlee Lake Public Access – Sherman Street	20' x 30' Pavilion with two BBQ Grills	\$14,500	MDNR, local, community service organizations	2024
HIGH	Brownlee Lake Public Access – Sherman Street	Picnic Tables (1 Standard, 1 ADA compliant)	TBD	MDNR, local, community service organizations	2022
HIGH	Brownlee Lake Public Access – Sherman Street	Driveway/parking area improvements	TBD	MDNR, MDEQ, local, foundations, community service organizations	2020
Lincoln Lake					
Priority	Site	Proposed Improvement	Estimated Cost	Funding Source(s)	Year*
MEDIUM	Lincoln Lake	Install picnic tables and grills	\$1,800	MDNR, local, foundations, community service organizations	2024

Snowmobile Trail					
Priority	Site	Proposed Improvement	Estimated Cost	Funding Source(s)	Year*
LOW	Snowmobile Trail	Designate a snowmobile route to Lincoln	TBD	MDNR, local, foundations, community service organizations	2024
Senior Center**					
Priority	Site	Proposed Improvement	Estimated Cost	Funding Source(s)	Year*
MEDIUM	Senior Center	Sidewalk	TBD	MCACA	2024
LOW	Senior Center	Landscaping, additional signage, parking lot improvements	TBD	MCACA	2024
LOW	Senior Center or Barlow Road Park or Railroad Park	Construct covered outdoor structure for games such as horseshoes, shuffleboard, and bocce ball	TBD	Local foundations, community services organizations, MCACA	2024
Village-General					
Priority	Site	Proposed Improvement	Estimated Cost	Funding Source(s)	Year*
HIGH	Village – general	Establish a wayfinding program	TBD	Local foundations, community services organizations	2024
MEDIUM	Village – general	Create a fenced in dog park	TBD	Local foundations, community services organizations	2024
*Some flexibility in the timeline may be necessary in order to allow for necessary engineering studies, environmental surveys, contractual scheduling, and the availability of funding.					
**These facilities are not under the ownership of the Village of Lincoln; however the Village is interested in being a partner in the implementation of these projects, as appropriate.					

Basis for Action Program

Recreation planning in the Village of Lincoln should consider its population.

1. The village has a large mid-life population. Individuals 45 to 64 years of age make up 28.3% of the population, while individuals aged between 65 and older make up 24.6%. Given the large population of older individuals, this population should be given consideration when planning for recreational activities, such as sidewalk installations and parking lot improvements.
2. Young people, under the age of 19, make up 23.8% of the village's resident population, while individuals between the ages of 20 to 44 years of age represent 23.2% of the population. Based on the composition of the village's population make up, recreational facilities in the village need to appeal to very diverse age groups, such as providing areas to skateboard, and opportunities to develop motor skills and cause and effect learning.
3. The village's median household income is \$31,250 compared to the State of Michigan's median income of \$52,668. Almost 63% of the households in the village receive social security income compared to 34% statewide. Additionally, the village's unemployment rate is 8.6% compared to 4.5% statewide. Consideration must be given to whether or not residents can afford to incur the cost of recreational activities and the drive time and expenses associated with travelling to recreational facilities.

Figures obtained from the U.S. Census Bureau, American Community Survey 2013-2017 5-year estimates.

With the Village's population in mind, the following factors also influence recreational plan development in the Village of Lincoln:

1. Public safety should be a consideration when developing recreational opportunities. For example, site lighting and signage provide a safe, secure environment by deterring vandalism, and the purchase of post-consumer rubber surface materials will deter fungus growth.
2. All residents and visitors should be able to enjoy recreational opportunities in the village. Transitional pathways and ramps, driveway and parking area improvements, post-consumer rubber surface materials, and ADA compliant picnic tables would provide for greater accessibility
3. Year-round recreational opportunities will improve the quality of life in the Village of Lincoln. For example, constructing a covered pavilion in Barlow Road Park will

allow for reunions, parties, and meetings during the summer and a skating rink during the winter.

4. Landscaping, beautification and amenity improvements will enhance each park and increase their usability.
5. Consideration should also be given to the recreational infrastructure's lifespan. For example, the swimming platforms at Brownlee Lake Park are approximately thirty years old.
6. The village has an abundance of natural beauty that should be enhanced. For example, the removal of organic slurry and restoring the fishery in Brownlee Lake will improve the lake's swimming and fishing experiences.
7. Recreational opportunities can also improve the village's economy through tourism revenue and increased adjacent property values. For example, the construction of an extension to the snowmobile trail from Barton City would bring tourism revenue to the village and the extension of LAMP would provide recreational facilities where they are currently lacking. Additionally, the most abundant land cover in the village is open water (22.3%), followed by forests (21.1%), cultivated lands (14.3%), and non-forested lands (11.6%). Residential developments are located within these natural areas and also improve the economy.

Appendix A- Results of Online Recreation Survey

DRAFT



Appendix B- Post-Completion Self- Inspection Report

DRAFT



Appendix C- Community Park and Recreation Plan Checklist

DRAFT

